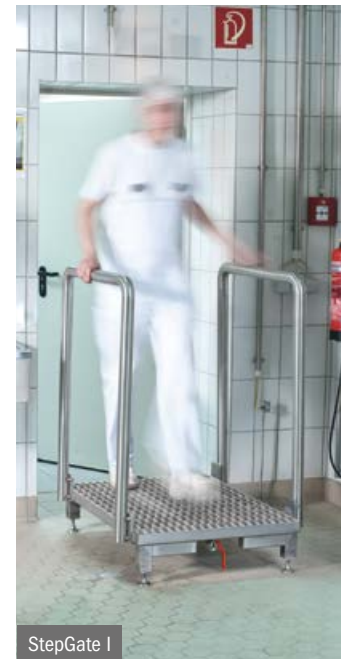


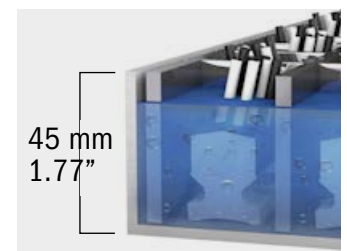
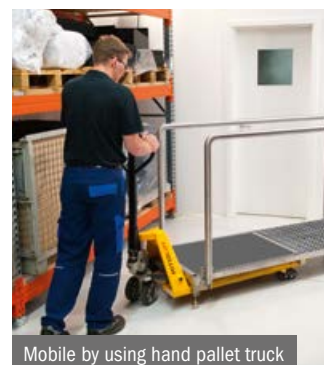
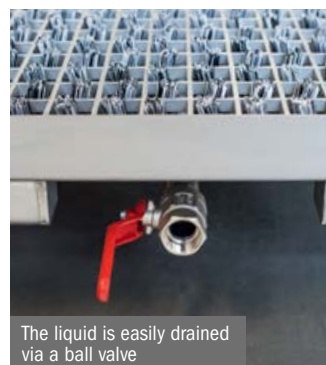
StepGate I – II – dry

The professional answer to disinfect footwear

- Rapid deployment, no installation needed
- Fill with disinfectant or dry brush
- Model „dry“ wipes off moisture
- Active cleaning, patented brush design
- Mobile by using hand pallet truck
- Built for the life of your facility



Technical Data	StepGate I	StepGate II	StepGate dry
Dimensions (W x L x H)	820 x 980 x 1180 mm	820 x 1960 x 1180 mm	820 x 1960 x 1180 mm
Weight	86 kg	160 kg	135 kg
Length of brush section (W x L)	660 x 960 mm	660 x 1920 mm	660 x 960 mm
Length of wipe off section (W x L)	-	-	660 x 960 mm
Capacity	15 l	2 x 15 l	15 l



stepgate.de